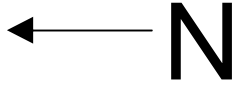
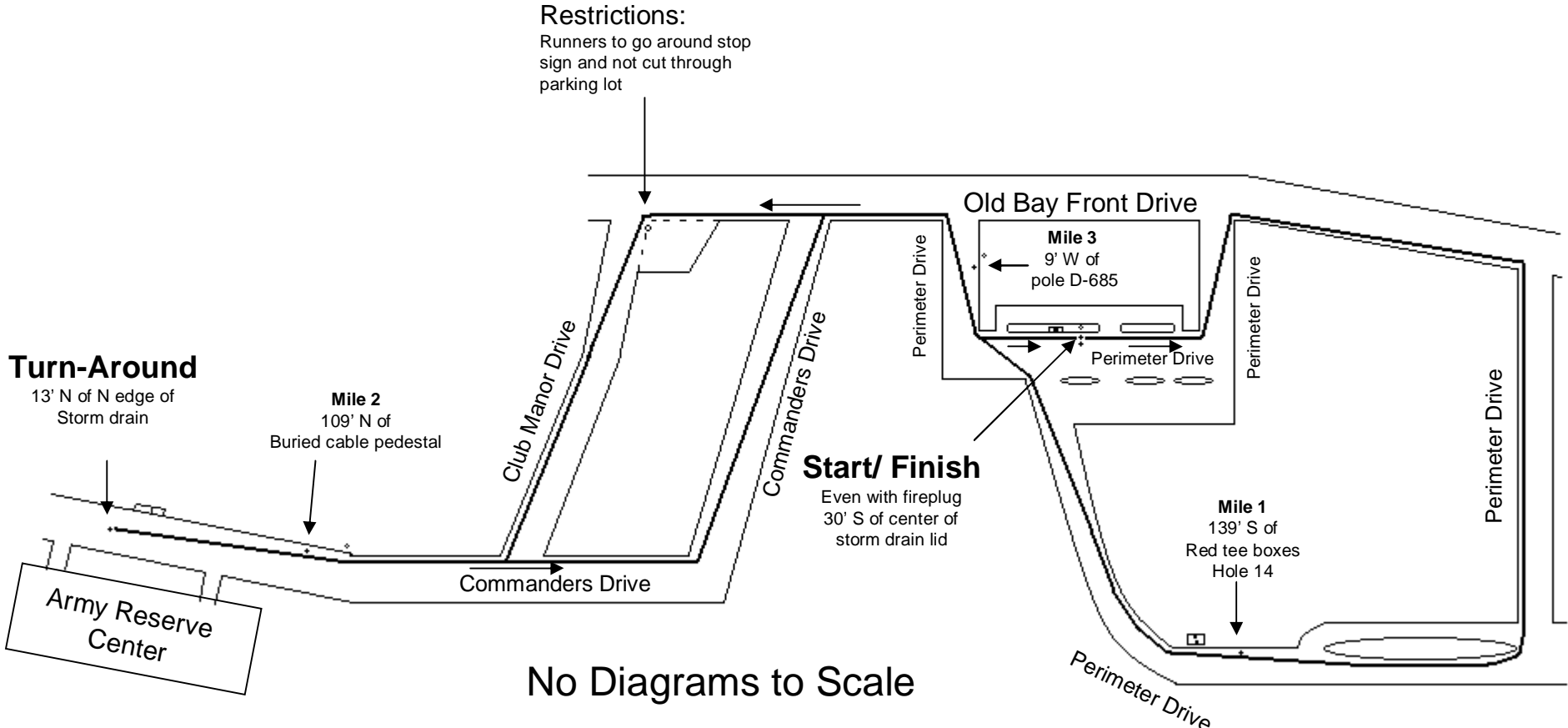


Rescue Run 5K

Mobile, Alabama



Restrictions:
Runners to go around stop sign and not cut through parking lot



Turn-Around
13' N of N edge of Storm drain

Mile 2
109' N of Buried cable pedestal

Start/ Finish
Even with fireplug 30' S of center of storm drain lid

Mile 3
9' W of pole D-685

Mile 1
139' S of Red tee boxes Hole 14

No Diagrams to Scale

Splits: Marked with green paint.
Washers on M1 and M3
Locations are given explicitly on map.

Start/Finish and Turn-around
marked with green paint
S/F marked with washer

Measured by Jon Bowie (Daphne, AL 251-209-0887)
jnbowie@gmail.com
27 February 2010
Calibrated on AL08007JD
Race contact: